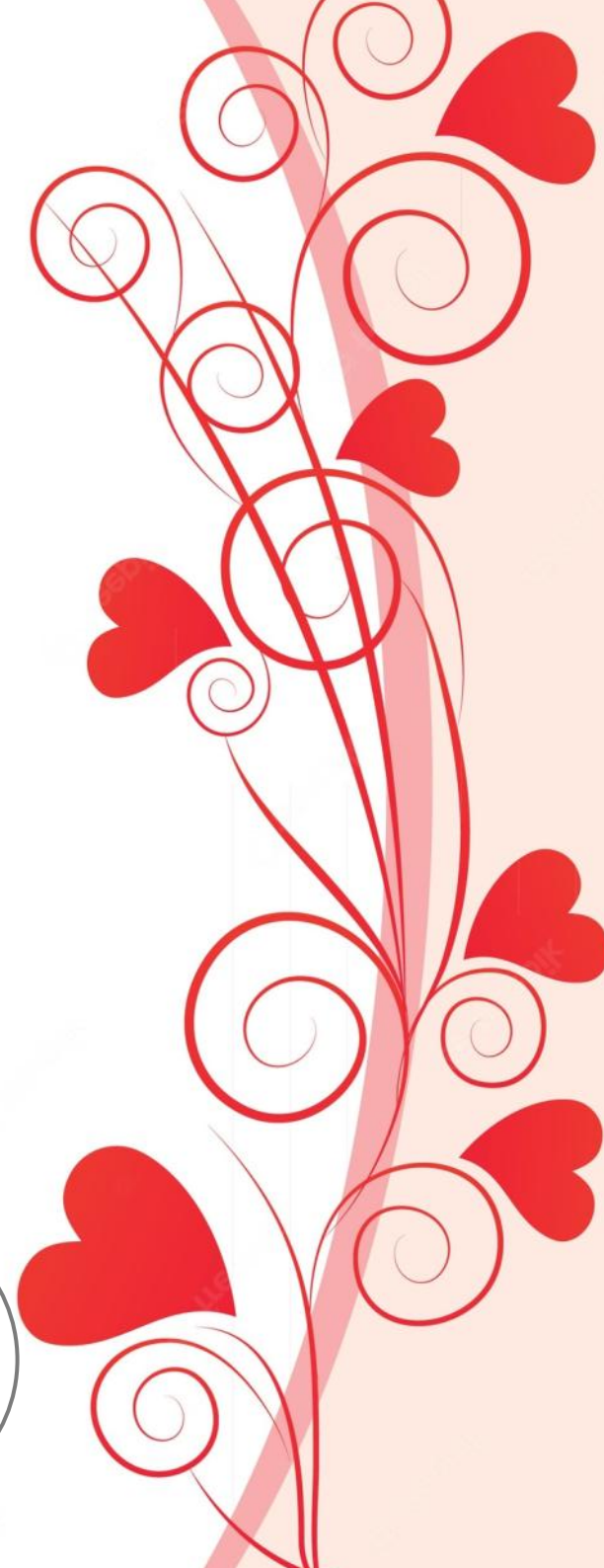


# Heart Purse

CROCHET



Art &  
Crochet

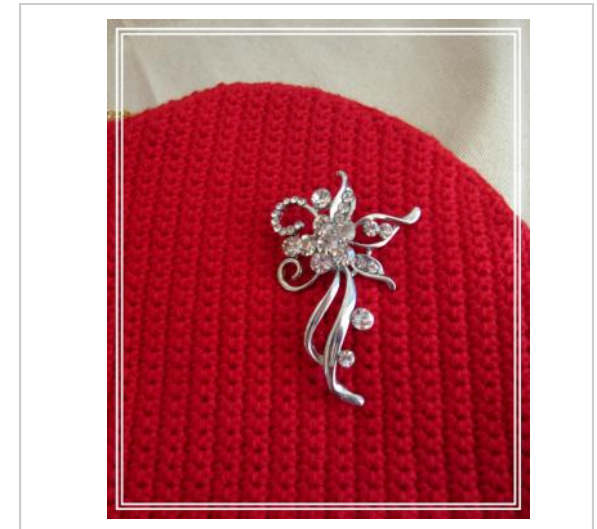


# PICTURES



## PURSE MEASURES

|              |               |             |
|--------------|---------------|-------------|
| Width: 25 cm | Height: 21 cm | Depth: 5 cm |
|--------------|---------------|-------------|

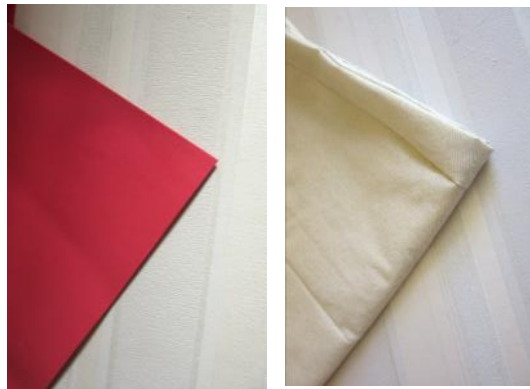




# MATERIAL



Cotton Yarn  
Crochet Hook 1.90 mm



Eva Rubber Sheet (2 mm)  
Lining



Hot Glue Gun



2 Zippers



Bag Loops



Chain

# INSTRUCTIONS

## US Terms


| Symbol | Name                                | Abbreviations        |
|--------|-------------------------------------|----------------------|
|        | Chain                               | CH                   |
|        | Slip Stitch                         | ST                   |
|        | Single Crochet                      | SC                   |
|        | 2 Single Crochet closed together    | 2 SC closed together |
|        | 2 Single Crochet in the same stitch | 2 SC together        |
|        | Single Crochet in back loop         | SC in BL             |
|        | Start                               |                      |
|        | End                                 |                      |

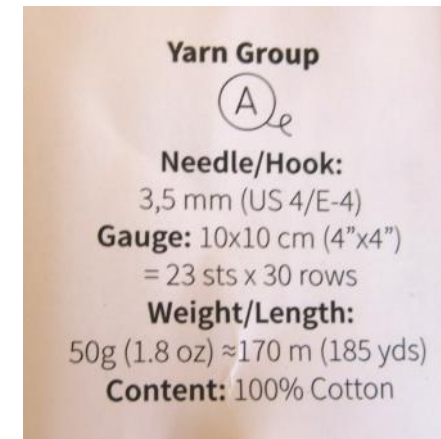
This book is translated from the Italian language.  
I apologize in advance for any grammatical English mistakes.

**Rw:** Row  
**Rd:** Round

## NOTE

The project was made with 100% cotton yarn:

-  90 g. Drops You (color 20)
- Crochet Hook 1.90 mm



It is possible to replace cotton yarn with any type of yarn.

It is possible to replace the eva rubber with felt.

The size of zippers is about 15-18 cm each one.

## BASE

Working SC in Rows.

**Rw 1:** 6+1 CH, 5 SC, 2 SC together (7).

**Rw 2:** 4+1 CH, 10 SC, 2 SC together (12).

**Rw 3:** 4+1 CH, 15 SC, 2 SC together (17).

**Rw 4:** 4+1 CH, 20 SC, 2 SC together (22).

**Rw 5:** 2+1 CH, 23 SC, 2 SC together (25).

**Rw 6:** 2+1 CH, 26 SC, 2 SC together (28).

**Rw 7:** 2+1 CH, 29 SC, 2 SC together (31).

**Rw 8:** 2+1 CH, 32 SC, 2 SC together (34).

**Rw 9:** 1 CH, 2 SC together, 33 SC (35).

**Rw 10:** 1 CH, 2 SC together, 34 SC (36).

**Rw 11:** 1 CH, 2 SC together, 35 SC (37).

**Rw 12:** 1 CH, 2 SC together, 36 SC (38).

**Rw 13:** 1 CH, 2 SC together, 37 SC (39).

**Rw 14:** 1 CH, 2 SC together, 38 SC (40).

**Rw 15:** 1 CH, 2 SC together, 39 SC (41).

**Rw 16:** 1 CH, 2 SC together, 40 SC (42).

**Rw 17:** 1 CH, 2 SC together, 41 SC (43).

**Rw 18:** 1 CH, 2 SC together, 42 SC (44).

**Rw 19:** 1 CH, 2 SC together, 43 SC (45).

**Rw 20:** 1 CH, 2 SC together, 44 SC (46).

**Rw 21:** 1 CH, 2 SC together, 45 SC (47).

**Rw 22:** 1 CH, 47 SC.

**Rw 23:** 1 CH, 2 SC together, 46 SC (48).

**Rw 24:** 1 CH, 48 SC.

**Rw 25:** 1 CH, 2 SC together, 47 SC (49).

**Rw 26:** 1 CH, 49 SC.

**Rw 27:** 1 CH, 2 SC together, 48 SC (50).

**Rw 28:** 1 CH, 50 SC.

**Rw 29:** 1 CH, 2 SC together, 47 SC, 2 SC closed together (50).

**Rw 30:** 1 CH, 50 SC.

**Rw 31:** 1 CH, 2 SC together, 47 SC, 2 SC closed together (50).

**Rw 32:** 1 CH, 50 SC.

**Rw 33:** 1 CH, 2 SC together, 47 SC, 2 SC closed together (50).

**Rw 34:** 1 CH, 50 SC.

**Rw 35:** 1 CH, 2 SC together, 47 SC, 2 SC closed together (50).

**Rw 36:** 1 CH, 50 SC.

**Rw 37:** 1 CH, 2 SC together, 47 SC, 2 SC closed together (50).

**Rw 38:** 1 CH, 50 SC.

Metà Base.

**Rw 39:** 1 CH, 2 SC closed together, 47 SC, 2 SC together (50).

**Rw 40:** 1 CH, 50 SC.

**Rw 41:** 1 CH, 2 SC closed together, 47 SC, 2 SC together (50).

**Rw 42:** 1 CH, 50 SC.

**Rw 43:** 1 CH, 2 SC closed together, 47 SC, 2 SC together (50).

**Rw 44:** 1 CH, 50 SC.

**Rw 45:** 1 CH, 2 SC closed together, 47 SC, 2 SC together (50).

**Rw 46:** 1 CH, 50 SC.

**Rw 47:** 1 CH, 2 SC closed together, 47 SC, 2 SC together (50).

**Rw 48:** 1 CH, 50 SC.

**Rw 49:** 1 CH, 2 SC closed together, 48 SC (49).

**Rw 50:** 1 CH, 49 SC.

**Rw 51:** 1 CH, 2 SC closed together, 47 SC (48).

**Rw 52:** 1 CH, 48 SC.

**Rw 53:** 1 CH, 2 SC closed together, 46 SC (47).

**Rw 54:** 1 CH, 47 SC.

## BASE

**Rw 55:** 1 CH, 2 SC closed together, 45 SC (46).

**Rw 56:** 1 CH, 2 SC closed together, 44 SC (45).

**Rw 57:** 1 CH, 2 SC closed together, 43 SC (44).

**Rw 58:** 1 CH, 2 SC closed together, 42 SC (43).

**Rw 59:** 1 CH, 2 SC closed together, 41 SC (42).

**Rw 60:** 1 CH, 2 SC closed together, 40 SC (41).

**Rw 61:** 1 CH, 2 SC closed together, 39 SC (40).

**Rw 62:** 1 CH, 2 SC closed together, 38 SC (39).

**Rw 63:** 1 CH, 2 SC closed together, 37 SC (38).

**Rw 64:** 1 CH, 2 SC closed together, 36 SC (37).

**Rw 65:** 1 CH, 2 SC closed together, 35 SC (36).

**Rw 66:** 1 CH, 2 SC closed together, 34 SC (35).

**Rw 67:** 1 CH, 2 SC closed together, 33 SC (34).

**Rw 68:** 1 CH, 2 SC closed together, 32 SC (33).

**Rw 69:** 1 CH, 2 SC closed together, 29 SC, 2 SC closed together (31).

**Rw 70:** 1 CH, 2 SC closed together, 2 SC closed together, 25 SC, 2 SC closed together (28).

**Rw 71:** 1 CH, 2 SC closed together, 2 SC closed together, 21 SC, 2 SC closed together (25).

**Rw 72:** 1 CH, 2 SC closed together, 2 SC closed together, 19 SC, 2 SC closed together (22).

**Rw 73:** 1 CH, 2 SC closed together, 2 SC closed together, 14 SC, 2 SC closed together, 2 SC closed together (18).

**Rw 74:** 1 CH, 2 SC closed together, 2 SC closed together, 2 SC closed together,  
6 SC, 2 SC closed together, 2 SC closed together, 2 SC closed together (12).

**Rw 75:** 1 CH, 2 SC closed together, 2 SC closed together, 2 SC closed together, 2 SC, 2 SC closed together, 2 SC closed together (7).

DO NOT cut off the thread. Draw 2 shapes of the Base on the eva rubber.

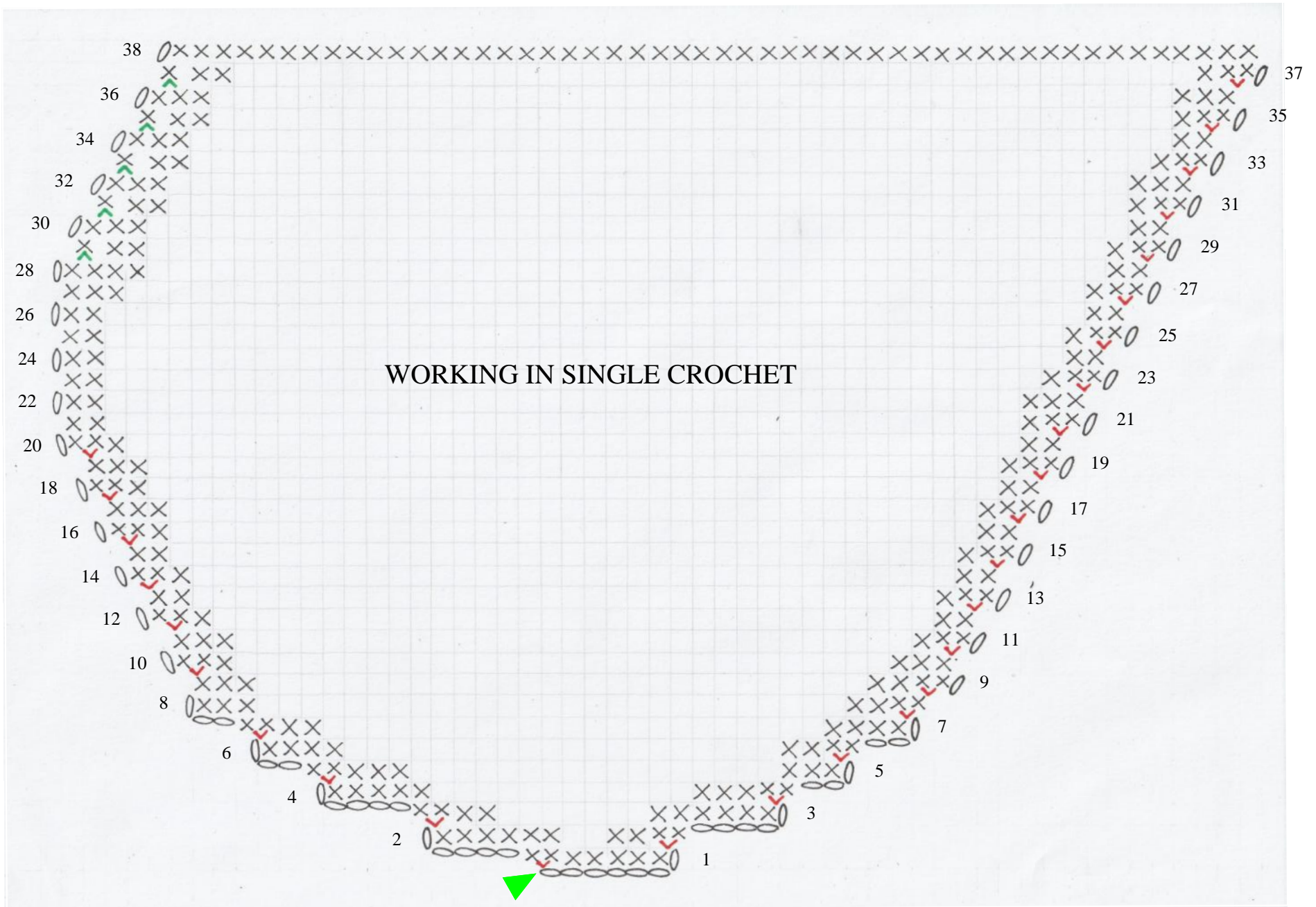
**Rd 76:** Work all around in SC.

**Rd 77:** Work all around SC in BL.

**Rd 78-82:** Work in SC x 5 rows. Cut off the thread.

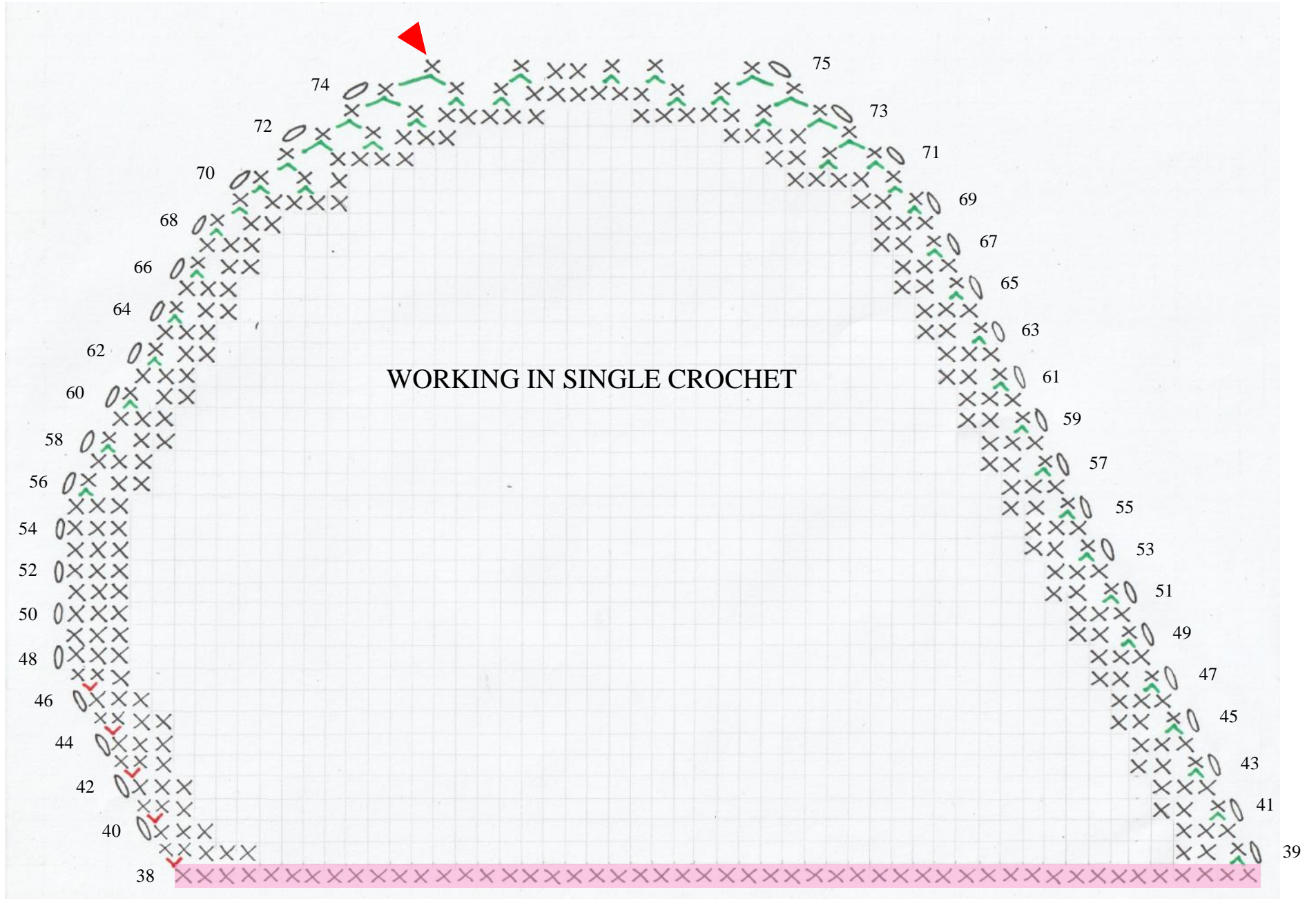
Work 2 Bases.

# BASE CHART





# BASE CHART





# ASSEMBLY



**Row 75:**  
Do not cut off the thread.



**Round 76:**  
Work all around in SC.



Place the Base  
on the eva rubber sheet.



Draw 2 shapes of the Base  
on the eva rubber.



Cut off the shapes.



**Round 77:** Work SC in BL.



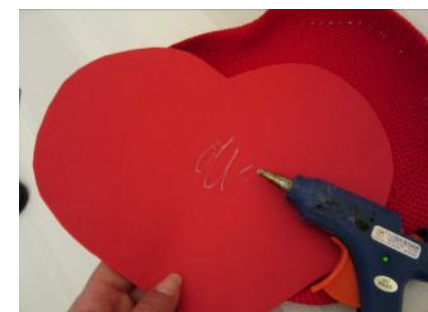
**Round 78-82:**  
Work all around in SC.



Place the eva rubber shape  
into the Base.



If necessary, reduce the Base.



Place hot glue at centre of Base.



Paste the eva rubber shape  
into the Base.



Paste the edges of the shape  
on Round 77.

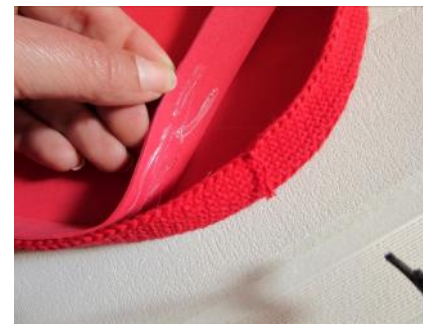
# ASSEMBLY



Measure the edge of the Base.



Cut out an eva rubber strip with the previously obtained measurement.



Paste the eva rubber strip on the edges of the Base.



Inside.



Join and sew the Bases.



Leave the space provided for inserting the zippers.



Place the bag loops on both sides of the bag.



Sew the zippers.



Purse with zippers.



Line inside of the bag as desired.



Place the chain in the bag loops.



**Optional:** place a brooch.  
Purse completed.



If you liked make the **Purse Heart**,  
subscribe to Facebook page and group



... to follow my next projects  
and share your crochet works!

*Claudia*

---

## **COPYRIGHT**

This book is marked.

The buyer can not distribute or transfer to third parties the material received,  
neither through paper, CD, websites, email, fax or any other means, electronic or not.

The user who will publish or transfer the contents of the book to third parties,  
even in partial form,.

The buyer can, optionally, print a copy of the book  
only and exclusively for personal use.

The buyer is authorized to sell the handmade product.

**THANK YOU!**